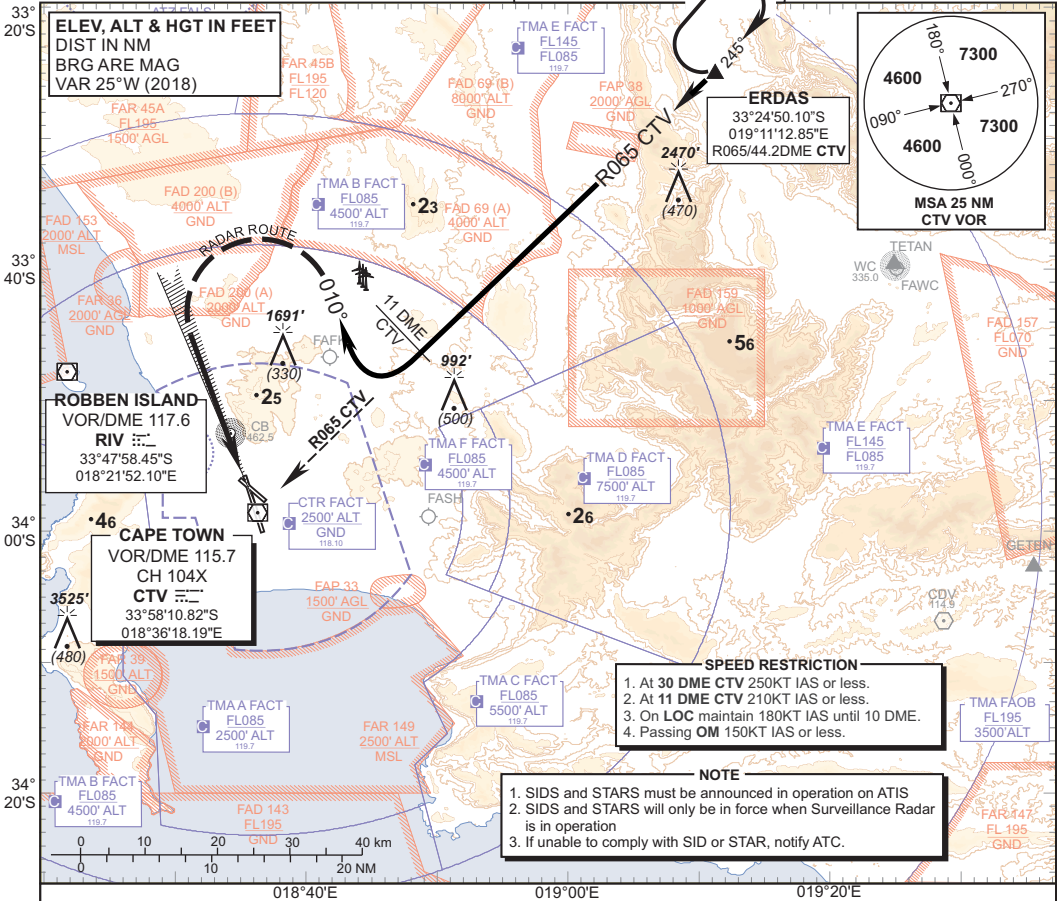


STANDARD ARRIVAL CHART - INSTRUMENT (STAR)

TRANSITIONAL ALTITUDE
7500'
 TRANSITIONAL LEVEL
ATC

APP 119.70
 TWR 118.10
 ATIS 127.00

CAPE TOWN INTL RWY 19 ERDAS 1B



ERDAS 1B RWY 19

Leave ERDAS on R065 CTW inbound. Passing 11DME CTW turn right to track 010° for radar vectoring onto the ILS RWY 19.

COMMUNICATION FAILURE PROCEDURE (Squawk 7600)

Before ERDAS: Proceed to ERDAS and enter the ERDAS hold. Hold at last assigned level for minimum 5 minutes, then climb/descend to FL100 in the hold. Leave ERDAS at FL100 and continue on the "After ERDAS" Communication Failure procedure.

After ERDAS: Continue on the routing for the ERDAS 1B STAR and maintain last assigned level. Crossing R035 CTW on track 010° turn left direct CTW, then descend to 6500' ALT. On reaching CTW complete the VOR/DME/ILS approach and land RWY 19.

In the event of a missed approach with the intention of diverting to an alternate aerodrome, proceed as follows:

- To the East: Follow the routing for the TETAN 1B SID.
- To the South-East: Follow the routing for the OKTED 1B SID.
- To the North and North-West: Follow the routing for the KODES 1B SID.

APP Frequency changed only
 CHANGE: No other changes were performed